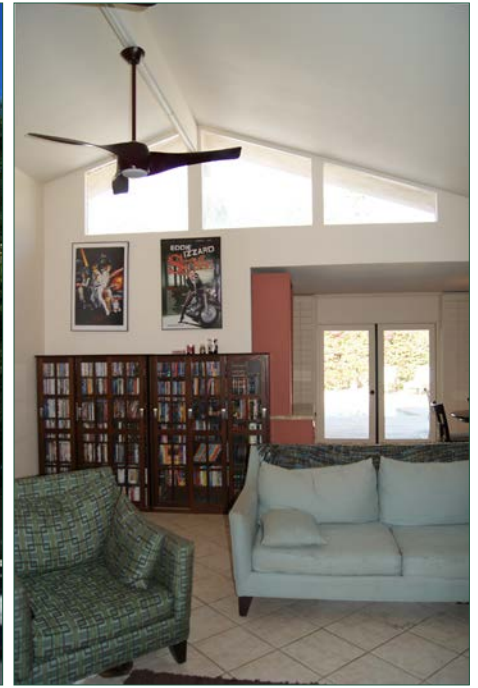


Indian Canyons Mountainview Home



1000 East Sierra Way
Palm Springs

- 2,470 Square Feet of Living Space
- 14,810 Square Foot Lot, Leased (\$4600/yr, expires 2063)
- Built in 1969
- 4 Bedrooms, 3.5 Baths
- Pool & Separate Hot Tub
- Listing No. 139
- Double Garage
- MLS No. 41445706

\$499,000

This stately home rests on a large corner lot at the entrance to Indian Canyons. Beautiful grounds and privacy are a hallmark of this home. Close to restaurants, Koffi and shopping of Smoketree. Three bedrooms, 2.5 baths in main house with large living/dining room including vaulted ceilings, stacked stone fireplace and built-ins. Clerestory windows and plantations shutters. Kitchen is bright with nice cabinets and granite. Two large bedrooms open to a huge walk-in closet. Separate guest house studio with 3/4 bath. Outdoor fireplace on the poolside patio, Tiki Hut bar and a very big pool yard with the most amazing unobstructed mountain views. Just a golf cart ride away from the 2 beautiful Indian Canyons golf courses.



SCOTT LYLE
Scott Lyle Realtors
License # 00700215



Direct: 760.327.4312
Office: 760.778.6200

