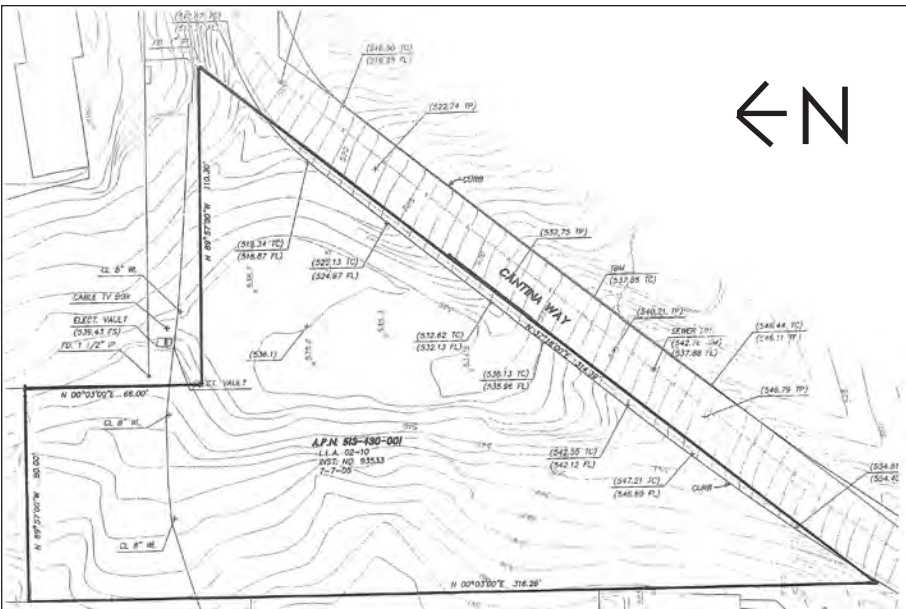


View Lot in the Mesa



- Fee Land
- Zoned R-1
- APN 513 430 049
- 30,492 Square Feet
- Listing # 307
- MLS # 41425161

2301 Cantina Way, Palm Springs

One of the last remaining buildable hillside view lots left in the Mesa area and the desirable south Palm Springs area. Surrounded by expensive homes and celebrity estates. Unobstructed city, valley and mountain views - a must see at night. Dramatic rock backdrop affords one of the most unique building sites with an approximately 4,500 square foot pad (buyer to verify). A rare opportunity to create your own hillside home with unbelievable views. Two preliminary conceptual home plans available by request. Geologic, grading, excavation research completed by current owner.

**Reduced
Price**

\$265,000



SCOTT LYLE
Scott Lyle Realtors
 License # 00700215



Direct: 760.327.4312
Office: 760.778.6200

