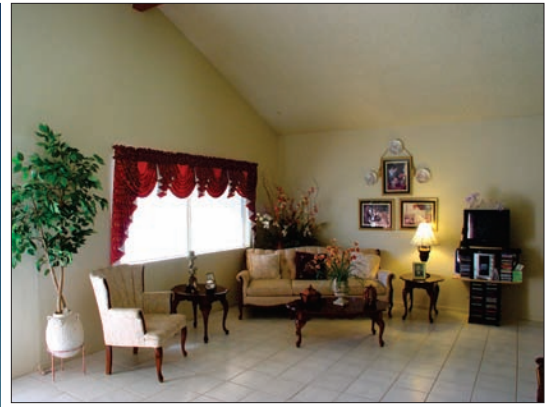


2975 N Bahada Road, Palm Springs



This Desert Park Estates home has great curb appeal. Tile floors, new roof, newer AC/heating. Large yard with a great mountain view and plenty of room for a pool. Whether this is your first home or for investment, this is a deal. Not a foreclosure or short sale.

- 1,334 Sq. Ft. of Living Space
- 10,019 Sq. Ft. Lot, Fee Land
- Built in 1977
- 3 Bedrooms, 2 Baths
- Double Garage
- Listing No. 113
- MLS No. 41397155

\$144,900



KURT KIHLMAN
Scott Lyle Realtors



Direct: 760.218.8220
Office: 760.778.6200

